

PROVISIONAL

SPECIFICATIONS

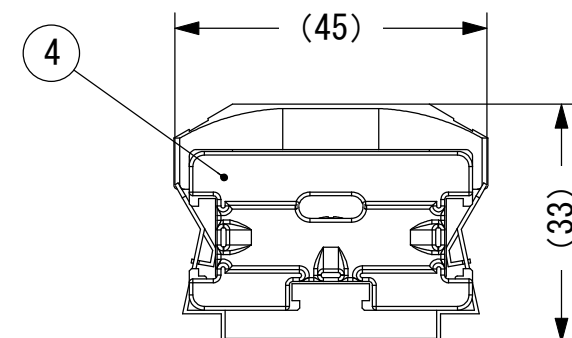
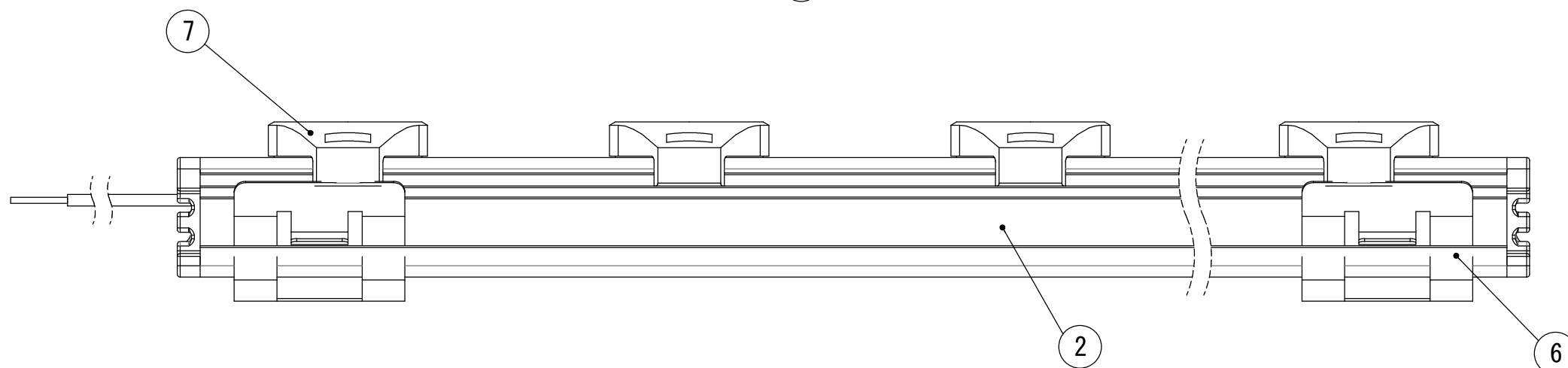
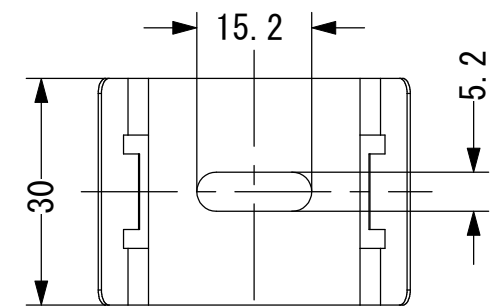
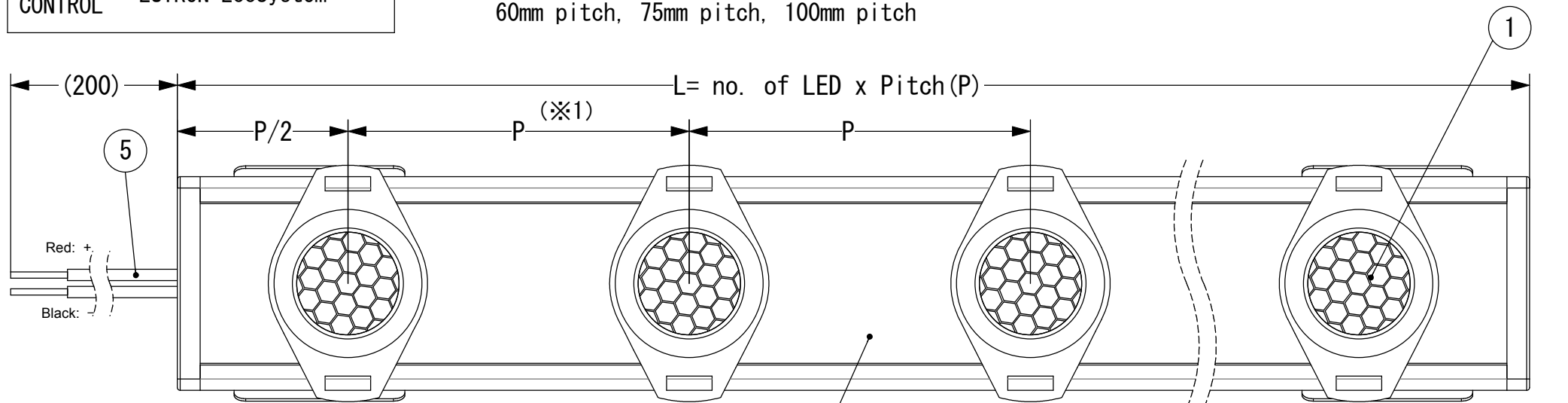
CURRENT : 700mA
POWER : 2.1W/LED
LIGHT CONTROL : LUTRON EcoSystem

<<PROHIBITION>>

Don't please absolutely live line work. A lighting apparatus breaks in an instant !

*Another LED constant current power supply is required.

(※1)
Lens pitch "P" will be three types.
60mm pitch, 75mm pitch, 100mm pitch



NOTE : Lutron Eco-System Driver Recommended
Maximum no. of LED : 15pcs

7	HONEYCOMB LOUVER		Glare cutoff angle : 50°
6	FIX BRACKET	SUS	
5	ELECTRIC WIRE		AWG20×2 [RED + , BLACK -]
4	END PLATE	PC	Surface treatment: Matte black
3	TOP COVER	AL	Surface treatment: Black almite
2	EXTRUDED SHAPES	AL	Surface treatment: Black almite
1	LENS		Light distribution: SP (40° ×15°) , 8° , 15° , 25° , 35°
	LED		Color temperature: 2200K, 2700K, 3000K, 3500K, 4000K, 5000K
No.	PARTS	MATERIAL	MEMO

Total length "L"	Bracket mounting interval
300~799 (mm)	250 (mm)
800~1499 (mm)	500 (mm)
1500 (mm)	1000 (mm)

DATE 2015/3/12

DESIGNED T. Hirai

CHECKED T. Inaba

APPROVED C. Ishibiki

TREATMENT FINISH

MATERIAL

UNIT mm

SCALE 1:1

TOKI CORPORATION CO., LTD.

PRODUCT No. GRHB-**-****K-**
GRHB-HLVR + GRHB-FIXB2-OP

TITLE DP-00072 Gradient HB

DRAWING NO. ****

REV 1

TEL:03-5763-6121 FAX:03-5763-6130